

Louisville Construction Watch

February 22, 2011

This is a periodic update of ongoing construction projects within the metro Louisville area.

This information was compiled by Steve Wiser, AIA, who is a Louisville architect, author, and historian. His email address is WiserAIA@Hotmail.com and his website is www.WiserDesigns.com

The University of Louisville has several projects underway. Scroll down to view these:



The 'Garvin Brown II Center' (University of Louisville Rowing) is almost complete. It is located on River Road, near Towhead Island (east of Tumbleweed / Big Four Bridge)



For more projects, scroll down to the end of this webpage



Steve Wiser, AIA
WiserAIA@Hotmail.com *www.WiserDesigns.com*

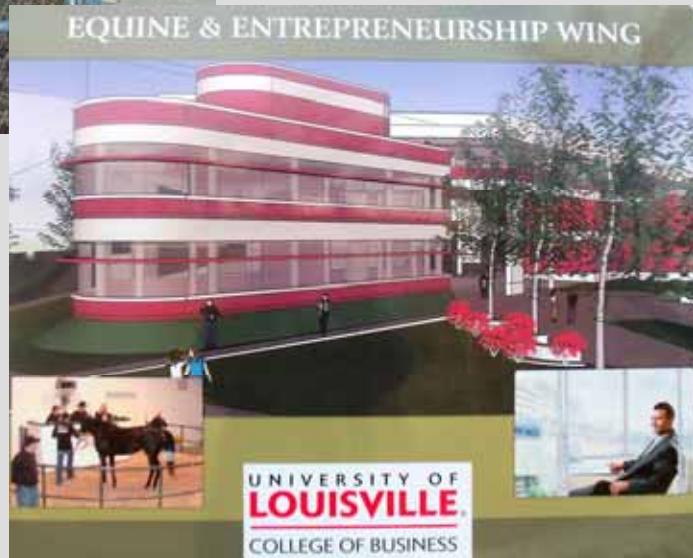
Louisville Construction Watch

February 22, 2011



The Equine & Entrepreneurship Wing of the Business School has just begun construction.

Below is a rendering of how it will look when completed.



A new dorm is under construction at Third and Cardinal Boulevard. It is built where the old Masterson's Restaurant once stood (*upper left*)

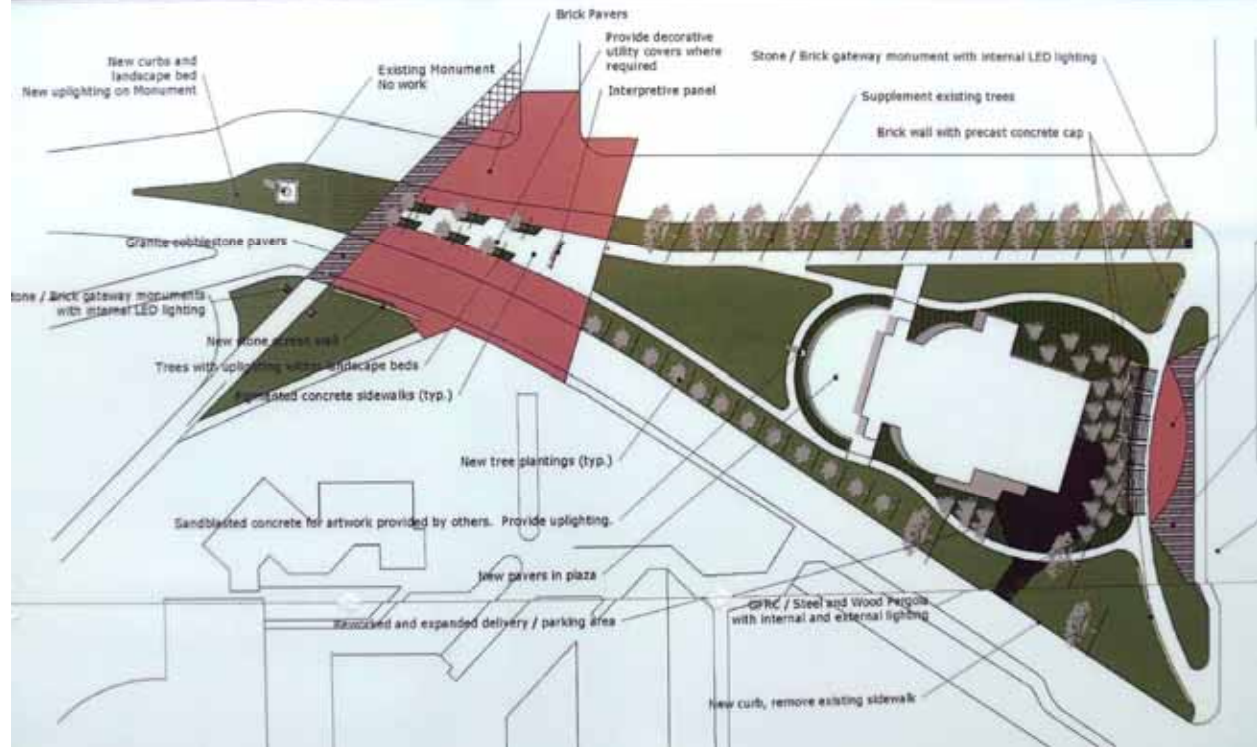


Steve Wiser, AIA

WiserAIA@Hotmail.com www.WiserDesigns.com

Louisville Construction Watch

February 22, 2011



Unity Place construction is proceeding.

It is located at Third and Cardinal Boulevard.



Steve Wiser, AIA

WiserAIA@Hotmail.com www.WiserDesigns.com

Louisville Construction Watch

February 22, 2011



'Shelby Hurst' a research and office park, is now being built on the U of L Shelby Campus, off Hurstborne Parkway near Shelbyville Road.



'Nucleus', a research development, has yet to break ground at Preston and East Market Streets.



Steve Wiser is a Louisville architect and historian.
For more info on Steve, click on his website
at www.WiserDesigns.com

Steve Wiser, AIA
WiserAIA@Hotmail.com www.WiserDesigns.com