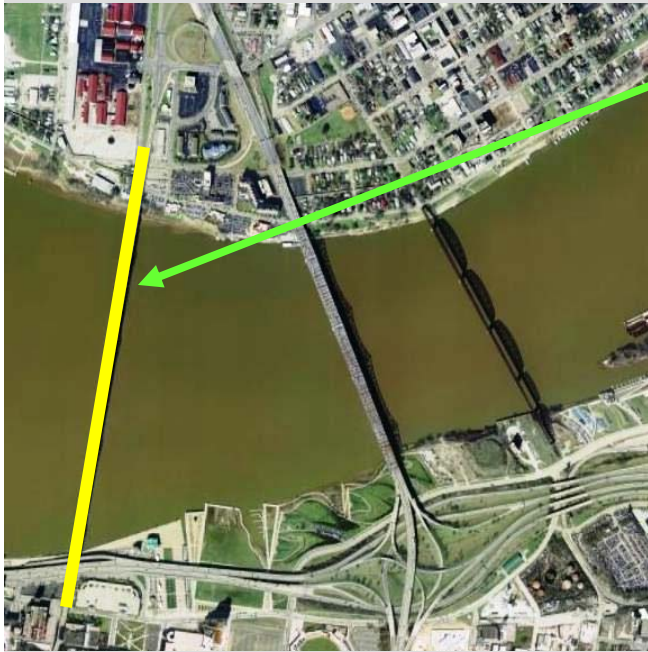


# Simple, Affordable Traffic Solutions for Downtown Congestion—NOW!

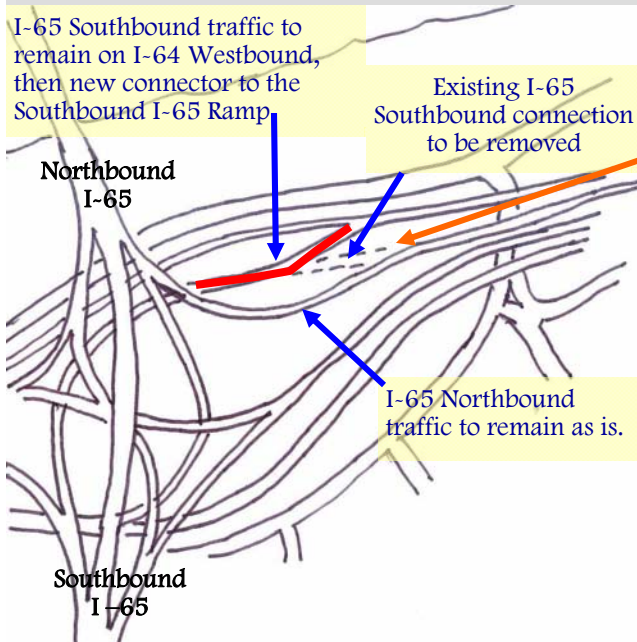
There are two simple, quick fixes to greatly ease congestion in Spaghetti Junction. Provided below are these two proposals.

Of note: I do not take credit for these great ideas. These were offered by other individuals and I have just put together the graphics to help those in decision-making positions to better understand how these would work and function.



Install 'Reverse Flow' Lane Signage on the Clark Memorial Bridge. This would be similar to the Bardstown Road 'reverse' flow center lane.

This would allow rush hour traffic 3 lanes on the Clark, instead of just two. This can be easily, simply, and affordably implemented—NOW!



Separate the I-65 Southbound traffic and the I-65 Northbound traffic before entering Spaghetti Junction! In other words, untangle this Spaghetti!

Southbound traffic should remain on westbound I-64, and then connect over to I-65 southbound ramp AFTER the I-65 Northbound ramp. I-65 Northbound would maintain its current travel path. Refer to illustration to the left that diagrams how this would function. This is a very easy, simple, and affordable solution that can be implemented—NOW!

Steve Wiser, AIA

WiserAIA@Hotmail.com www.WiserDesigns.com