

# 6 Biggest Myths of the ORBP

There have been many been numerous misinterpretations and incorrect statements regarding the Ohio River Bridges Project. In an effort to clarify the issues that are important to the decision-making process, the 'Say No to Bridge Tolls' group is providing the following information to assist the community in better understanding this project.

## **Myth 1 : East End Bridge will not significantly alleviate traffic congestion**

**FACT:** Building only the East End Bridge will provide MORE RIVER CROSSINGS (10,500 more per day) than any other alternative, according to the 2003 Bridge Environmental Impact Statement

## **Myth 2: Project cannot be built in phases**

**FACT:** The Record-of-Decision DOES ALLOW for incremental implementation. St. Louis is currently doing just this on its similar bridge project in order to avoid tolling.

## **Myth 3: Spaghetti Junction is dangerous and one of nation's top congested bottlenecks**

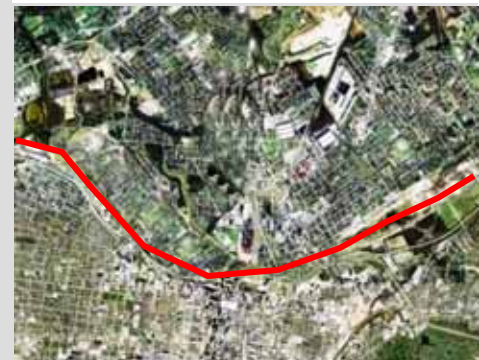
**FACT:** There has only been one death in Spaghetti Junction in the past ten years and I-65's 'hospital curve', which creates many serious accidents, will not be improved by this project. While Spaghetti Junction does lack emergency pull-off lanes, this is NOT UNIQUE since all other regional cities (Cincinnati, St. Louis, etc.) have the same layout. INRIX, which is a widely-recognized rating system for traffic issues, DOES NOT RATE Spaghetti Junction as one its 100 worst bottlenecks.

## **Myth 4: Sprawl will be generated by the East End Bridge**

**FACT:** Sprawl is actually increasing due to lack of East End Bridge because more people want to avoid the downtown congestion caused by few bridges. A satellite view (*right*) clearly shows this excessive sprawl on the Kentucky side. TOLLS WILL only ACCELERATE SPRAWL on the Kentucky side since people will not want regularly to pay tolls.



**Below:** Satellite view of metro Louisville, WITHOUT the Ohio River, which demonstrates amount of open land on Indiana side as opposed to Kentucky side.



**Continued on Next Page**

# 6 Biggest Myths of the ORBP

*Continued from Previous Page*

## **Myth 5: Community input supports the Bridges project**

**FACT:** The community is very frustrated by the continuing misinformation as to the skyrocketing costs, schedule, and scope of this massive, inflated project. And, tolls have never been part of community input process. If community input was of value, then the East End Bridge would have already been built since the 3 public polls indicate an overwhelming support for this bridge. A recent public poll by cn2 finds that 85% of public does not support the ORBP 2-bridge proposal, but 50% do support building the East End Bridge. (17% support Downtown Bridge).

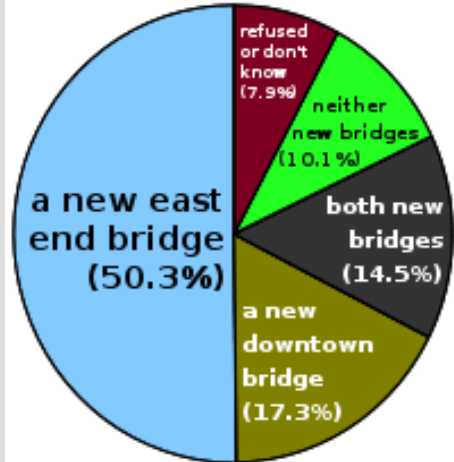
## **Myth 6: 56,000 jobs will be created** *(per Bridges Coalition)*

**FACT:** At most, 5,400 TEMPORARY JOBS may be created *(per Bridge Coalition's own 'Economic Benefits Assessment')*

## **SUMMARY:**

The facts do not support the Ohio River Bridges Project as currently proposed.

“Say No to Bridge Tolls” encourages redefining this vital community initiative to a design that is reasonable and affordable.



**Above:** *cn2 Poll Results*



***SAY NO TO BRIDGE TOLLS***